



KELVIN GIORMANI



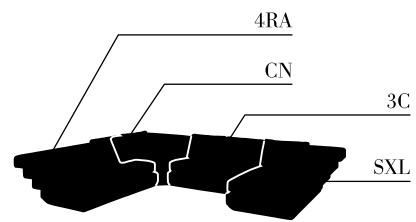
Mr. Kelvin Ng and the award presenter, Mr. Jason Harris



LEVICE III 0138V
KELVIN GIORMANI Fall 2009 Collection
Pinnacle Design Achievement Awards 2013
Winner Design in MOTION UPHOLSTERY Category







Leather: 9423F (subject to availability)

SCALA 0355



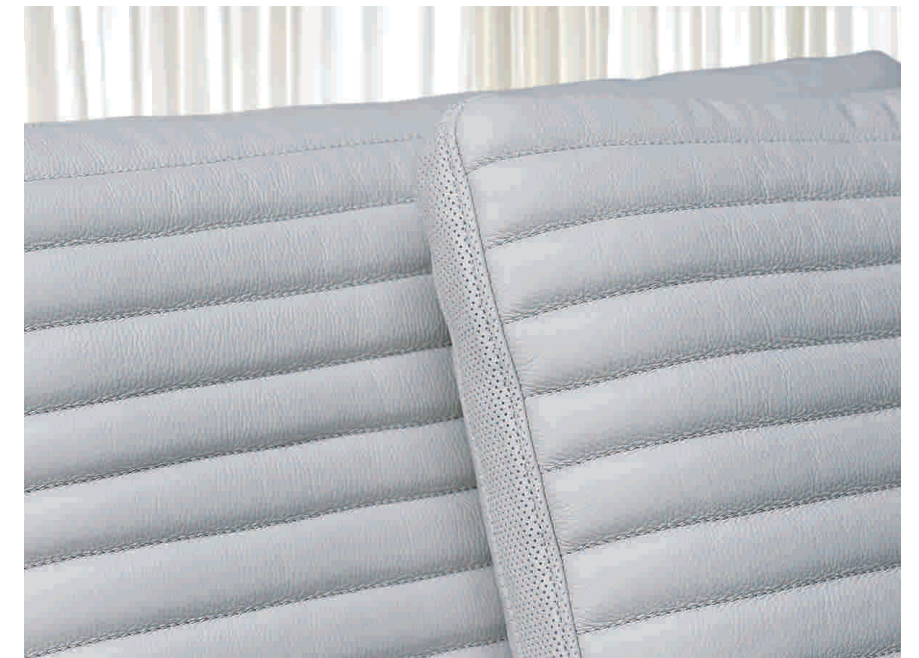
On June 22, 2013, the Hani Terrace Fields in Yunnan province (China) was approved by the World Heritage Committee of the United Nation to be one of the world cultural heritage sites. This story inspired the design creation of Model SCALA (no. 0355).



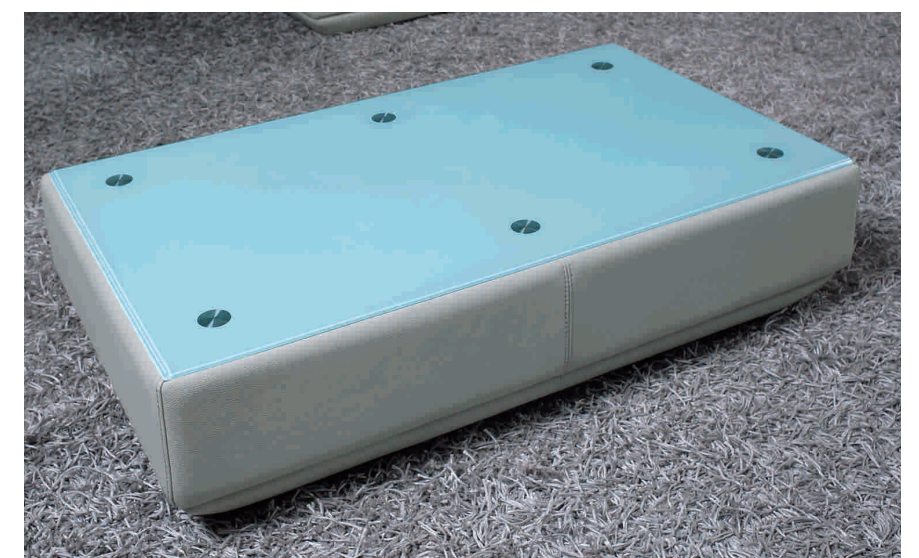
For each back cushion, one side of it appears to have the straight line pattern; and the other side comes in clean and smooth. You can place the back cushions any way preferred.



The realization of multiple steps on sofas requires high skills on wooden frame building, leather tailoring and upholstery. Model SCALA (no. 0355) is certainly an art piece for those who appreciate meticulous craftsmanship. The free styling back cushions are ideal for creating the comfort while sitting on Model SCALA (no. 0355).



The multiple straight lines pattern is sewed on one side of each back cushion. The special technique of sewing a half of an inch of foam with genuine leather has created a stereoscopic impression.



Optional leather upholstered coffee table (STG3W) comes with the design matching with the sofa seat front frame of the model. Tempered glass is used for the table top.



When terrace fields are reversely viewed, they look like a part of an upside-down Egyptian pyramid that makes a stunning design idea for the back side of the sofa frame for Model SCALA (no. 0355).

The multiple straight lines pattern on back cushions well matches the multiple steps concept being inspired by terrace fields.

The multiple steps concept, being inspired by terrace fields, allows the sofa arm performs both functions as an arm rest and as a back rest while sitting.



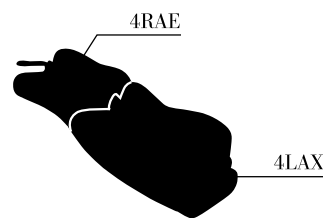
The inclination of terrace fields has inspired the creation of the optimum seating pitch of the back front of Model SCALA (no. 0355).

The realization of multiple steps on sofas requires high skills on wooden frame building, leather tailoring and upholstery. Model SCALA (no. 0355) is certainly an art piece for those who appreciate meticulous craftsmanship.



KELVIN GIORMANI





Leather: 2216F (subject to availability)

SERPENTE II 0351



The design of Model SERPENTE was inspired by one of the 12 animals of the Chinese zodiac, which is snake. For the most part of 2013, it was the year of Snake according to the ancient Chinese calendar. That made it a good time for Model SERPENTE to be designed and born in 2013.

The unconventional shapes and forms of Model SERPENTE are fully inspired by the body of a snake. The overall round shape of Model SERPENTE inherits the smooth and soft nature of a snake body.

The curved body shape of Model SERPENTE can be visualized when it is an individual sofa or in compositions. The second version, SERPENTE II (no. 0351), of the model even has a very unique curved back. It's perfect to be placed at the center of a large living room as a divider when it is in a composition. When it is viewed from the top, you might be able to feel that "a snake is moving".



The sofa arm design resembles the ingenious image of a snake body.
In the Chinese culture, a snake is a symbol of ingeniousness.
In some part of the Western culture, there is an analogy that people are "wise as a snake".



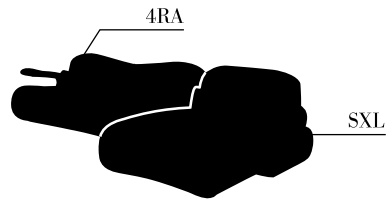
The matching armchair for Model SERPENTE (no. 1DVAC) was deliberately designed with a narrower arm for better scaling.
It also comes with a swivel base.





The design of Model SERPENTE was inspired by one of the 12 animals of the Chinese zodiac, which is snake. For the most part of 2013, it was the year of Snake according to the ancient Chinese calendar. That made it a good time for Model SERPENTE to be designed and born in 2013.

The unconventional shapes and forms of Model SERPENTE are fully inspired by the body of a snake. The overall round shape of Model SERPENTE inherits the smooth and soft nature of a snake body.



Leather: 9470F (subject to availability)

SERPENTE I 0350



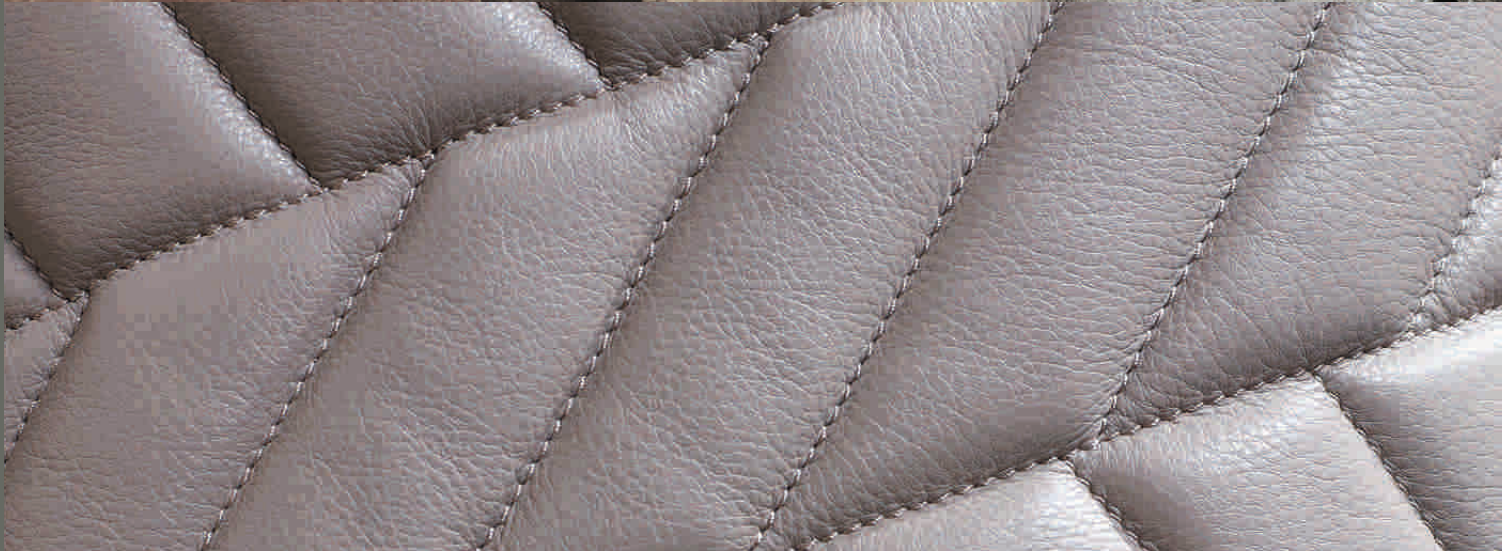
In the Chinese culture, a snake is a symbol of ingeniousness. In some part of the Western culture, there is an analogy that people are "wise as a snake".

The curved body shape of Model SERPENTE can be visualized when it's an individual sofa or in compositions. The first version, SERPENTE I (no. 0350), of the model has a straight back design to allow the availability of more individual items. That permits more possibilities of sofa compositions for easier matching different living room interior space plannings.



Optional stool (ST2) comes with matching seat frame of the sofa.

The sofa arm design resembles the ingenious image of a snake body.



KELVIN GIORMANI





4D

Leather: 2267F (subject to availability)

SNElLO III 0352C



Model SNElLO III (no. 0352C) has a minimalistic sofa frame that does not carry any leather weaving effect. To give it some signature elements, the designer has created some abstract pattern to be stitched on the back cushion front. The pattern resembles some grains on a leaf. The idea was inspired by the fact that the wide genuine leather edging of the back cushions looks very much like the natural edges of a leaf.

With the relatively slim sofa frame, Model SNElLO matches perfectly with the exceptional V-shape tall legs (19cm). Also, the "V" shape is oriented at 2 different dimensions which can be viewed from all angles. The legs are made with rectangular stainless steel tubes.



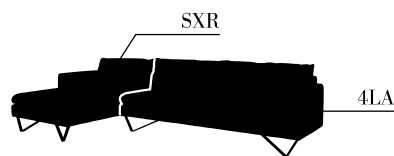
The pattern on the back cushion resembles some grains on a leaf. The idea was inspired by the fact that the wide genuine leather edging looks very much like the natural edges of a leaf.



The version of Model SNElLO that has the minimalistic sofa frame design can also match with 3 different back cushions design options. Matching with the clean-look back cushions makes it become SNElLO I (no. 0352A, as seen on the picture above). When the back cushions with wide genuine leather edging (but without leaf pattern) are chosen, it will become SNElLO II (no. 0352B). Again, the back cushions of SNElLO III (no. 0352C) come with the leather edging plus leaf pattern. Optional headrest (HR4) enhances the neck support while sitting.

Optional stool (ST2) comes with matching stainless steel legs.





Leather: 7566F (subject to availability)

SNELLO V 0353B



The general design idea of Model SNELLO is to create a sofa model that well expresses the beauty of different leather weaving effects.



There are 2 options of back cushions for this version of Model SNELLO (with the diamond-shape weaving effect). First, Model SNELLO V (no. 0353B) has the back cushions with a wide genuine leather edging. For those who prefers a cleaner look, you can choose Model SNELLO IV (no. 0353A) when its back cushions have no particular edging (see Page 36 for reference). Optional stool (ST2) comes with matching stainless steel legs and genuine leather weaving effects.



With the relatively slim sofa frame, Model SNELLO matches perfectly with the exceptional V-shape tall legs (19cm). Also, the "V" shape is oriented at 2 different dimensions which can be viewed from all angles. The legs are made with rectangular stainless steel tubes.



Model SNELLO V (no. 0353B) presents diamond-shape weaving effect with genuine leather at the sofa base front and both arm sides.





Leather: 0517F (subject to availability)

SNELLO VI 0354A



Leather: 0517F (subject to availability)

RIANO II AC72



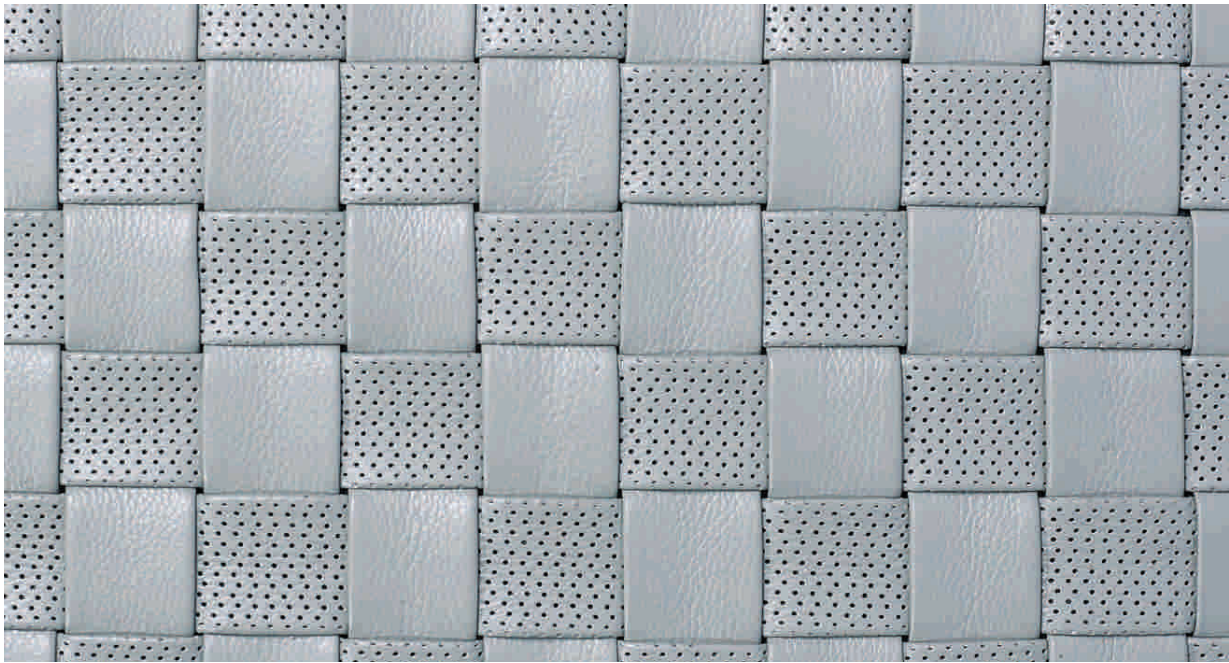
RIANO II (the second version of the original RIANO armchair) features the square weaving effect at both arm sides. This "value-added" idea can also be regarded as a customized feature for most of the KELVIN GIORMANI armchairs to match the sofas that have the same leather weaving effect.

Model SNELLO VI (no. 0354A) presents square weaving effect with genuine leather at the sofa base front and both arm sides. In addition, the perforation effect is alternately added to the genuine leather strips that visually enhances the depth of the weaving effect.

With the relatively slim frame of Model SNELLO, the exceptional V-shape tall legs (19cm) match perfectly with the sofa frame. Also, the "V" shape is oriented at 2 different dimensions which can be viewed from all angles. The legs are made with rectangular stainless steel tubes.

SNELLO VI 0354A

Optional stool (ST2) comes with matching stainless steel legs and genuine leather weaving effects.



The perforation effect is alternately added to the genuine leather strips that visually enhances the depth of the weaving effect. It is indeed a creative way to present genuine leather weaving effect.

